

DRAFT
Report on the GLOVE Project Evaluation Workshop on October 4th 2006

Deb Elkington
Principal Consultant
Program Evaluation and Gender
Clear Horizon
November 3, 2006

1. Background

In August 2006 Clear Horizon was asked to assist the Glove Steering Committee to put together a monitoring, evaluation and learning (MEL) plan for the GLOVE project. Clear Horizon proposed that the monitoring and evaluation and learning plan for the project be based on the creation of a program logic model. The program logic model will form the spine of the monitoring, evaluation and learning plan. It was proposed that the MEL be built in consultation with the Steering Committee.

2. Purpose of Steering Committee Workshop the October 4th

On the 4th October a workshop was held with the Steering Committee to begin to develop the MEL framework. The specific purpose of the workshop was to

- To provide Steering Committee members with a broad understanding of what the People-Centered Program Logic approach to evaluation is, the steps involved in building the MEL framework or plan, and to begin a discussion on how the approach and plan could link to the GLOVE audit process
- To begin to build a skeleton program logic model for the GLOVE project which can form the spine or basis for the development of the GLOVE monitoring and evaluation and learning plan and that can be further developed at the municipal levels
- To agree next steps

Deb Elkington from Clear Horizon presented an overview of the people centered program logic approach to evaluation, and the steps required to build the MEL using the approach¹.

3. Workshop Outcomes

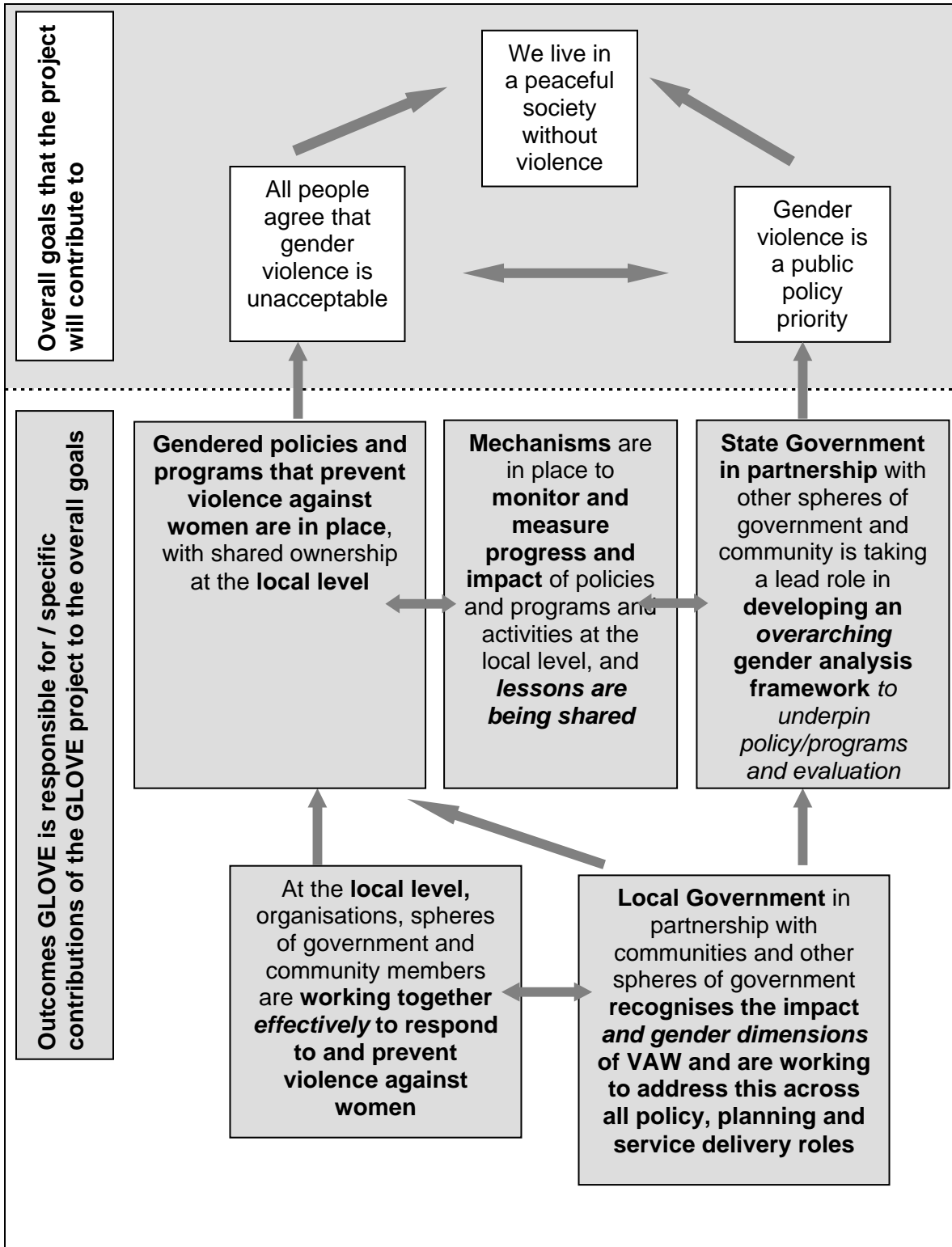
The Steering Committee undertook some initial steps to build the MEL framework, developing the first stage of the overarching program logic for the GLOVE.

This involved agreeing the broader societal level goals the GLOVE project would contribute towards, and agreeing the more specific goals or top level outcomes for the GLOVE project itself. See the diagram on the following page.

¹ For overview of presentation see power point slides attached

Draft 1 – Stage 1

Developing a simple overarching program logic model for the Glove Project



The people centered program logic model is centrally concerned with identifying

- who the project needs to target in order to bring about the desired change or outcomes sought and
- what these people need to be doing differently (changes in practice) in order to achieve the project outcomes

During the workshop the Steering Committee split into two groups to identify the key stakeholders the project needed to influence and identify the practice changes sought.²

Due to time constraints the two groups were unable to meet to consolidate together their lists of stakeholders and practice changes. As such, a consolidated table was prepared by Clear Horizon following the workshop. It represents a first draft only of a consolidated list that groups the key stakeholders and key practice changes identified by the Steering Committee members at the workshop.

It is important to view this table as tentative. Both the list of key stakeholders the project wishes to influence and the way in which they are grouped, and the practice changes sought, will need further discussion and refinement at the Steering Committee level, and following this, at the level of the local projects. The consolidated table is shown in attachment 4.³

4. Next steps

The work undertaken by the Steering Committee at the workshop on the 4th represents the first stage of the development of the overarching logic model for the GLOVE project and MEL plan for the project. The overarching logic model including identification of key stakeholders the GLOVE project as a whole wants to influence and the practice changes sought, at this point provides and represents an initial overarching guide for the projects at the local level. Since the project as a whole is conceptualized around, and relies on the analysis and the development of strategies at the local level to prevent violence against women, it is anticipated that in particular the Key stakeholders and practice changes sought will be further developed and revised as the project is informed by the analysis and development of strategies at the local level.

The next step is to focus attention on the local level in order to begin to develop the detail of the MEL plan and to focus data collection.

Working within the overarching logic model for the GLOVE provided by the Steering Committee, individual projects at the local level work will build more detailed “sub program” logic models specific to, and driven by, the local contexts.

The “sub program” logic models will provide the basis for developing detailed and specific monitoring and evaluation (MEL) plans for the local municipal programs, and will also be an important basis for evaluation of the GLOVE as a whole. The approach will help ensure that the monitoring and evaluation plan and methods developed for

² Key stakeholder and practice changes identified by each group are attached (attachment 2 and 3).

³ The draft consolidated table grouping key stakeholders and practice changes is attachment 4.

the GLOVE project are carefully selected to reflect information needs, resources, and contexts at the local level.

It was suggested and agreed at the Workshop on the 4th October that the best way of proceeding would be to undertake a pilot to develop a “sub program” logic and specific MEL plan in one of the participating municipalities. The lessons learned from piloting the evaluation approach in the pilot area could then inform the approach and development of program logic and MEL plans in the other municipalities.